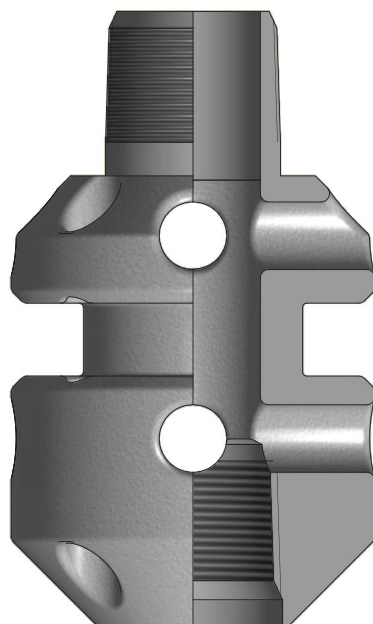




Black Gator® Motor Base Plug



The Black Gator® Motor Base Plug provides a dummy neck for attaching a bypass clamp at the bottom of the Electric Submersible Pump (ESP). The Motor Base Plug is uniquely designed to prevent trapped pressure at the EUE connection. The base of the plug has a 2-3/8" EUE box for suspending optional accessories below the ESP, such as memory gauge carriers or sacrificial anodes.

FEATURES

Unique lightweight design that prevents trapped pressure in the threads

Compact design

Precision investment casting

SPECIFICATIONS

Low alloy steel or 13Cr material options to specification API 5CT

2-3/8" API EUE Pin x Box design

OD to suit ESP

Part Number	Outside Diameter (in.)	Neck Diameter (in.)
MBP-0007	3.75	2.44
MBP-0007	4.56	3.00
MBP-0007	5.40	3.25