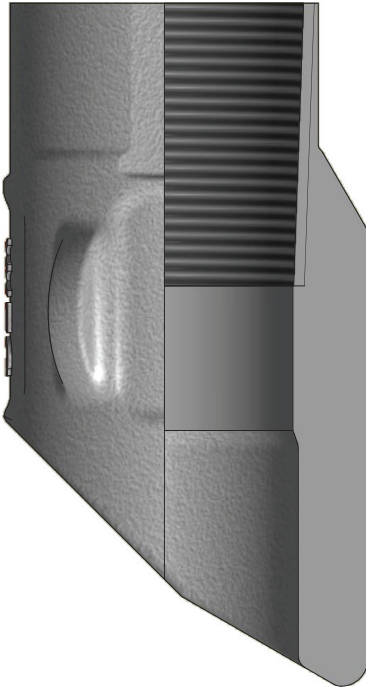




Black Gator® Wireline Entry Guide



The Black Gator® Wireline Entry Guide (WEG) ensures a smooth, guided re-entry of the wireline or coiled tubing tool string back into the bypass tubing, after completion of logging or well intervention.

The WEG is made up to the bottom of the last joint of bypass tubing, below the Electric Submersible Pump (ESP). Smooth edges prevent cutting of wireline or slickline cable during logging operations.

FEATURES

- Full mule shoe design
- Smooth internal corners
- Finned features for centralization
- Compact design
- Precision investment casting

SPECIFICATIONS

- Low alloy steel or 13Cr material options to specification API 5CT
- 3.80" OD to fit inside 4-1/2" liner

Part Number	Box Thread (in.)	Outside Diameter (in.)
WEG-00005	2-1/8 F2J	3.80
WEG-00004	2-3/8 4.6# F2J	3.80
WEG-00002	2-7/8 6.4# F2J	3.80