

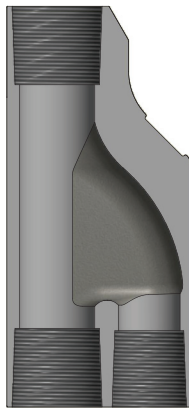


## Black Gator® Y-Tool



The Black Gator® Y-Tool provides a single connection to the production tubing, the logging bypass tubing and the pump sub. The Y-Tool allows the conveyance of wireline deployed logging or intervention tools into the wellbore and to the reservoir perforations below an Electric Submersible Pump (ESP). It also allows the ESP assembly to be deployed on the pump sub alongside the bypass tubing.

A second connection at the base of the Y-Tool allows the ESP assembly to be suspended in parallel with the production tubing. The Y-Tool has slots on either side to allow the passage of the ESP power cable, motor lead extension or other auxiliary service lines. These lines are secured in the Y-Tool slot with cable clips thus ensuring full protection during deployment.



### FEATURES

- Compact design
- Precision investment casting
- Fitted with cable retaining clips
- 7" and 9-5/8" casing sizes

### SPECIFICATIONS

- Low alloy steel or 13Cr material options to specification API 5CT
- 5,000 psi MWP



Part Number	OD (in.)	TOP Box Thread (in.)	Bypass Box Thread (in.)	Pump Box Thread (in.)
7YT-0012-1	5.940	2.875 6.4# FCJ	2.875 6.4# FCJ	2.375 4.6# FCJ
7YT-0012-2	5.940	2.875 6.4# VAM TOP	2.875 6.4# VAM TOP	2.375 4.6# VAM TOP
958YT-0006-1	8.000	3.500 9.2# FCJ	3.500 9.2# FCJ	3.500 9.2# FCJ
958YT-0006-2	8.000	3.500 9.2# VAM TOP	3.500 9.2# VAM TOP	3.500 9.2# VAM TOP