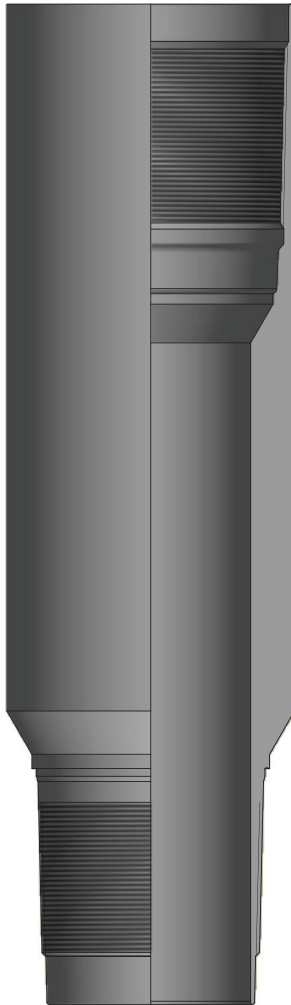




## Black Gator® Bypass Tubing Reducing Crossover



The Black Gator® Bypass Tubing Reducing Crossover is utilized when converting the connection on the Telescopic Swivel to a smaller size of bypass tubing. This crossover is required where the standard size production tubing will not fit into the casing drift internal diameter when run in parallel with the Electric Submersible Pump (ESP).

### FEATURES

Box x Pin thread  
Other threads available on request

### SPECIFICATIONS

Low alloy steel or 13Cr material options to specification API 5CT  
5,000 psi MWP

Part Number	Box Thread	Pin Thread (in.)
TSN-00010	2.900-6 Stub ACME	2-3/8 4.6# F2J
TSN-00007	3.560-6 Stub ACME	2-7/8 6.4# F2J